



# SETTING INDUSTRY STANDARDS WITH A 15-YEAR SYSTEM WARRANTY





# SETTING INDUSTRY STANDARDS WITH A 15-YEAR SYSTEM WARRANTY

## BACKING UP QUALITY A PROMISE

The IDEEMATEC Horizon L:TEC® comes with a 15-year warranty for structural and mechanical components as standard. The IDEEMATEC track-record for structural stability is founded on German engineering skills and products that are built to last. We back up our claims with the longest warranty offered in the market. Our products withstand even the harshest of weather conditions, and we back this up with support services to match.

In addition to the 15-year system warranty, IDEEMATEC warranties the structure against perforation corrosion for a period of 25 years - based upon the project corrosion classification.



## LONG-TERM PEACE OF MIND

Most other market players offer 10 years on structural components and 5 years on mechanical components. IDEEMATEC is not only offering 15 years on the structure, but also on the mechanical parts, including bearings and the gearbox – that's what sets it apart from the competition.

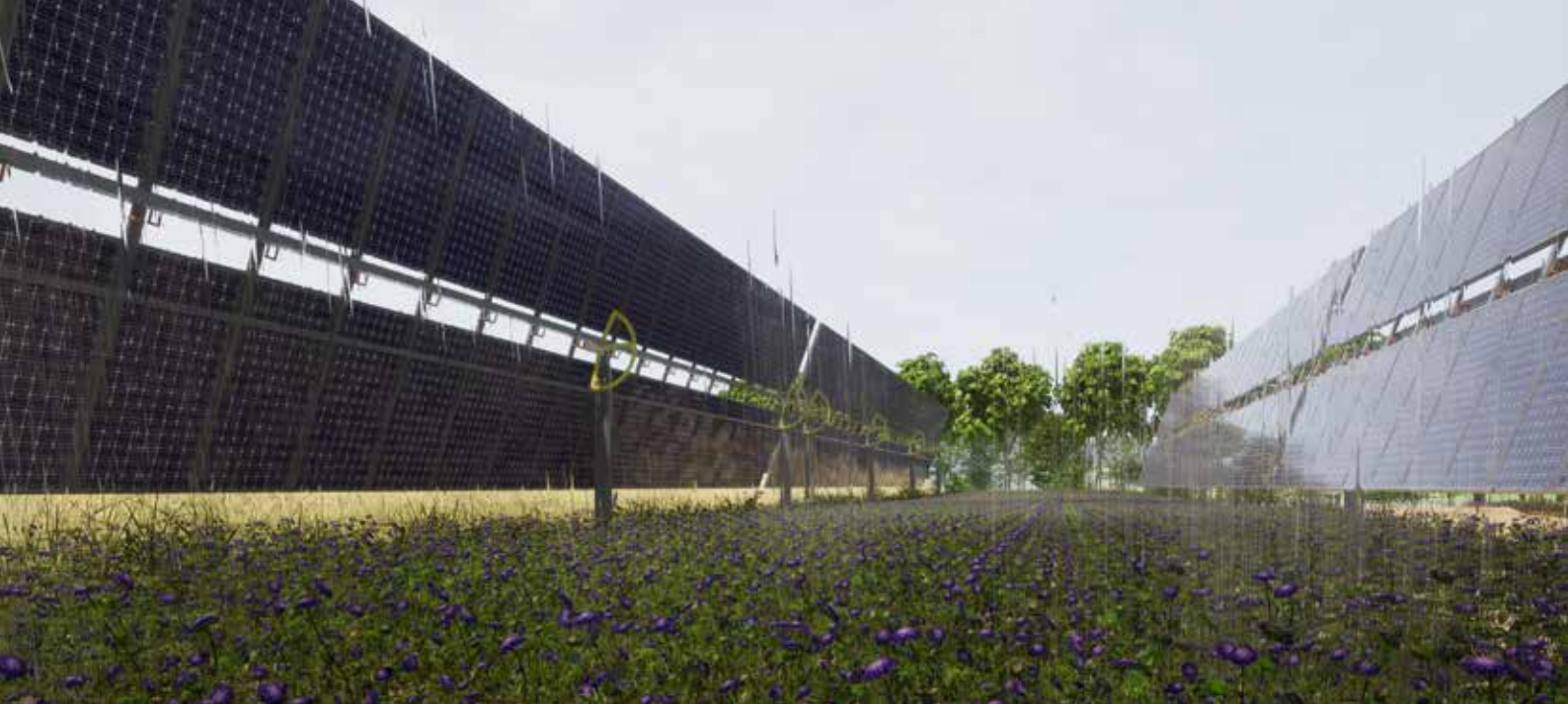
The ability to offer this warranty comes from almost 20 years in solar industry, with 12 years of tracker experience. High quality German engineering and continuous innovation means that IDEEMATEC has confidence in its solutions and proven components, and knows that they will stand the test of time.

Both the one-in-portrait (1P) and two-in-portrait (2P) versions of the tracker feature a patented self-locking technology that secures modules in position against torsional galloping, caused by extreme wind loads, to reduce maintenance costs and expand product lifespan. The tracker integrates seamlessly with bifacial modules to generate more energy per tracker, and accommodates extra-large photovoltaic modules. Panels are able to remain in stow position, at a zero-degree angle, against up to 180 mile per hour winds.

The self-locking works via a segment sprocket connected to the drive tube, which locks the tables in place when the motor is not moving. The decoupled drive transports dynamic loads into foundational posts, and away from gearboxes, increasing the life expectancy of all components.

Measuring up to 195 meters in length, Horizon L:TEC is the longest solar tracker on the global market and is available in all markets.





## WHAT DOES THIS MEAN FOR ME?

15-year warranty on structure and mechanicals against component failure. This covers the steel structure and moving mechanical parts

In the case of unexpected events, IDEEMATEC will supply replacement components free of charge

IPP's can be secure in the knowledge that their plant will continue to have high availability over the long term

EPC's can ensure high operational reliability from the start

O&M companies can focus on site management and safety checks, as minimizing maintenance and repairs is integrated in the design

Secondary owners benefit from the residual period of warranty extension, giving them reassurance about the ongoing operational cost and system reliability

# WOULD YOU LIKE TO DISCUSS YOUR FUTURE PROJECTS?

Contact us at: [info@ideematec.com](mailto:info@ideematec.com)





HORIZON  
L:TEC®

# THE NEW BENCHMARK FOR SOLAR TRACKING

A successor to IDEEMATEC's highly successful Horizon **safeTrack H4**®, the Horizon **L:TEC**® offers the market's most advanced zero loss bifacial, two-in-portrait tracker solution.

Pioneering a range of technologies, including signature decoupled drive technology paired with an innovative new locked sprocket system for maximum stability.



The drive unit places the table loads directly into the foundations. Only 1.4% of the load from the table is on the drive tube during tracking, the rest is diverted to the post. Once locked, there is no force on the drive tube. This results in a stronger system that is built to last for the long term.

This is why we can build the longest trackers on the market, that reaches to 195 m in length.

The Horizon **L:TEC**® can secure standard, bifacial and XXL modules in position against extreme winds.





SAFE

0° Stow Position



Permanently Locked



Higher Yield



Easy Installation



30% Less Parts

### BEST LIFETIME VALUE

- Highest additional gains
- Optimizes overall yields
- Improves system lifetime performance
- 99.6% uptime

### ZERO-DEGREE STOW

- Unique protection against extreme weather conditions
- Withstands up to 180 mile per hour winds
- Snow sensor for colder regions

### BEST-IN-CLASS WARRANTY

- 15-year structural & mechanical warranty as standard
- 25-year warranty against perforation corrosion

### DESIGN FLEXIBILITY

- Secures standard, bifacial and XXL modules
- Adjustable for any dimensions or string lengths
- Zero shading on bifacial modules
- Adaptable to any terrain
- Can be used for Agri PV projects

### AT LEAST 30% FEWER PARTS THAN THE AVERAGE SYSTEM

- Preassembled parts
- Significantly reduce installation time
- Expands project lifespan
- Delivers maintenance costs savings



GENERAL MECHANICAL FEATURES	
Tracking type	Horizontal single axis tracker
Typical tracker size	Up to 190 m - up to 5 m width Up to 195 m on request
Ground cover ratio (GCR)	Configurable: typical 30 - 50%
Array height	Up to 2.5 m Up to 3.5m for Agri PV
Wind protection	Zero degree stow position
Corrosion protection	Galvanized steel C3 as standard C4 or C5 on request
Foundation	Sigma foundation
Tracking range	55° as standard Up to 60° upon request Up to 70° for Agri PV
Ground Clearance	300mm/500mm Up to 1500mm for Agri PV
Inclination	Up to 36%
Cleaning	Verified by IDEEMATEC

POWER AND CONTROL SYSTEM	
Software	Aurora™ by IDEEMATEC
Solar Tracking Method	Astronomical Algorithm 3D adaptive back-tracking
Communication	Full wired redundant data transfer & control flow Through power cables, eliminating need for additional cables. Reduces the need for trenches, providing cost benefit TAN
Control	One cluster control unit per 28MW (includes weather station, redundancy computer, SCADA ready) One tracker control unit per motor
Power	AC power and self-powered solutions UPS available on request
Drive type	High accuracy slew gear – disconnected
Motor type	AC CE 400V 50Hz/ UL 480V 60 Hz/ DC 24V
Operating temperature	-20°C up to +55°C
Warranty	15-years System Warranty

KEY STATISTICS
Up to 360 modules on 1 tracker
Up to 12 Strings on 1 tracker
Flexible string configuration allows up to 40 modules per string
Suits all modules types
72 Cells, 78 Cells and XL modules, bifacial, thin film and First Solar.
From 5 motors per MW
From 150 posts per MW
Up to 7.5m post distance

